



ORTHOPEDIC PRODUCTS
www.orthotech-bg.com

In catalog »

Orthoteh

new series

Orthoteh *orthoSoft*

Orthoteh 3D Contour

Orthoteh Custom made insoles

Soft Cervical Collar Comfort N 30202

- Precise anatomic shape
- Comfortable polyurethane material
- Provides soft support for the lower jaw
- Soft cotton lining

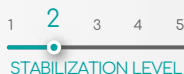
INDICATIONS

- Distortions of the intervertebral joints
- Muscle strains and myalgia
- Postoperative treatment



SIZE

Measure the circumference of the neck



HEIGHT CIRCUMFERENCE

1 - 8cm M: 27 - 36cm

L: 36 - 46cm

2 - 10cm M: 27 - 36cm

L: 36 - 46cm



Semi-rigid Cervical Collar Standard N 30204

N 30204

- Precise anatomic shape
- Comfortable moderate level support
- Cotton lining and rounded edges
- Stabilises cervical vertebrae
- Reinforced construction with a polyethylene insert

INDICATIONS

- Distortions of the intervertebral joints
- Muscle strains and myalgia
- Postoperative treatment



SIZE

Measure the circumference of the neck



HEIGHT CIRCUMFERENCE

1 - 8cm M: 27 - 36cm

L: 36 - 46cm

2 - 10cm M: 27 - 36cm

L: 36 - 46cm





Shoulder Brace Light N 20105

- Relief of back and neck pain
- Lightweight and convenient construction
- Soft and immobile back plate
- Breathable, hypoallergenic, elastic material

INDICATIONS

- Postural kyphosis
- Back-musculature pain related to the work posture
- Shoermann-Mau disease

SIZE

Measure the circumference under the chest level



CIRCUMFERENCE

S	60 - 70 cm
M	70 - 80 cm
L	80 - 90 cm
XL	90 - 100 cm



Shoulder Brace Standard N 20101

- Improves posture
- Improved stability with two elastic stays
- Adjustable correction with Velcro straps
- Breathable, hypoallergenic, elastic material

INDICATIONS

- Postural kyphosis
- Schoermann - Mau disease
- Paravertebral myalgia

SIZE

Measure the circumference under the chest level



CIRCUMFERENCE

S	43 - 55 cm
M	55 - 70 cm
L	70 - 85 cm
XL	85 - 105 cm



Shoulder Abduction Orthosis Extra N 31207

- Comfortable hold of the shoulder joint in the 30° position
- Ergonomic lumbar pillow
- Easy to adapt via the attachment straps
- Soft cotton lining

INDICATIONS

- Post-surgical treatments of rotator cuff
- After luxation and subluxation of the shoulder joint

SIZE

Available in one universal size, which covers a circumference under the breast of 70 to 140 cm.



Clavicle Brace Fix N 20103

- Stable fixation of the clavicle area
- Comfortable construction in the axillary area
- Soft and immobile back plate
- Breathable, stable, and antibacterial material with soft padding

INDICATIONS

- Clavicle fractures
- Sternoclavicular or acromioclavicular joint distortion
- Rigid kyphosis

SIZE

Universal size.
Excess length could be cut



Clavicle Brace Fix plus N 20104

- Stable fixation of the clavicle area
- Comfortable construction in the axillary area
- Soft and immobile back plate
- Breathable, stable and antibacterial material with soft padding

INDICATIONS

- Clavicle fractures
- Sternoclavicular or acromioclavicular joint distortion
- Rigid kyphosis



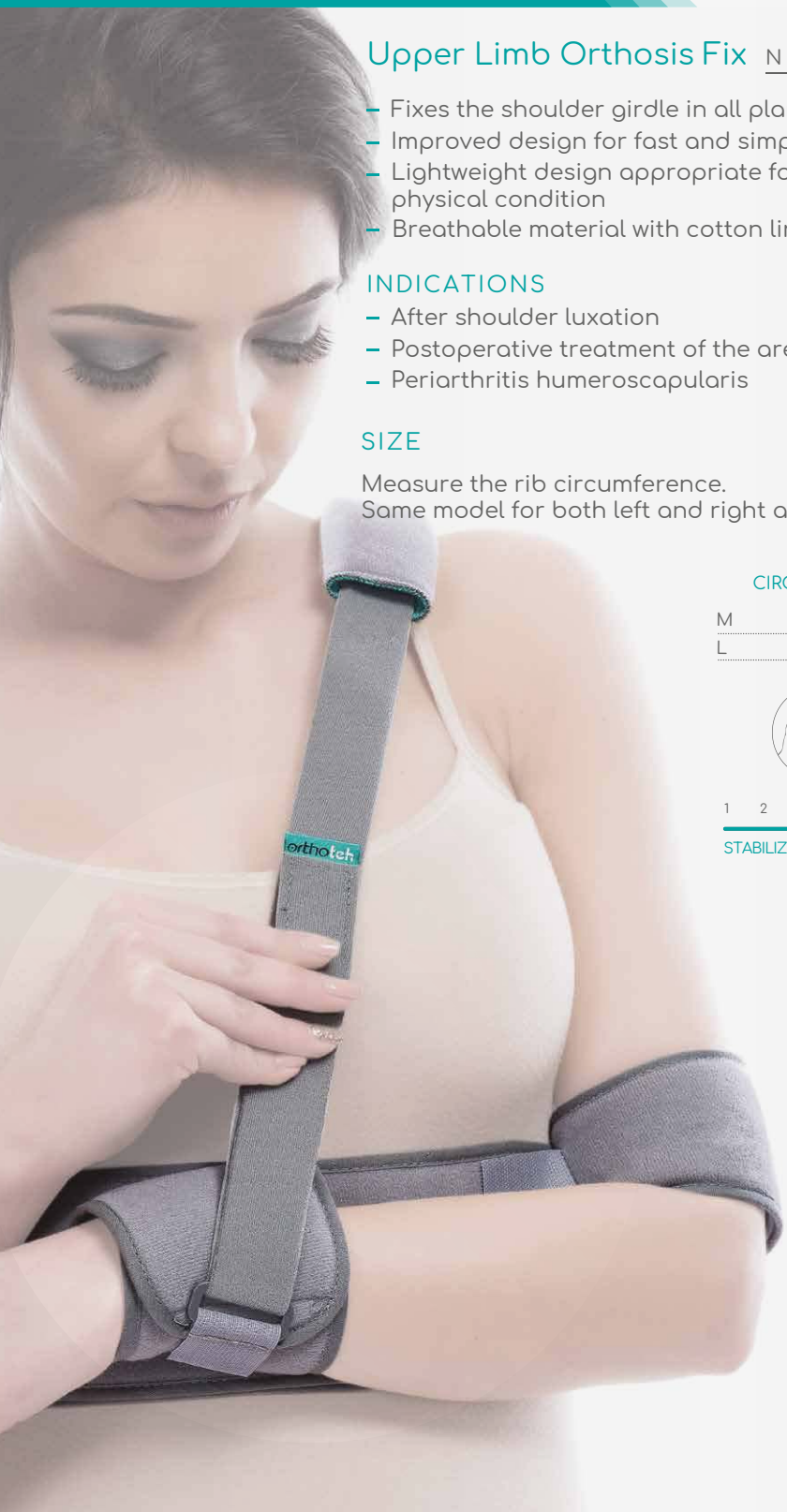
SIZE

Measure the circumference with a starting point on the back spine in the middle of the shoulder blades, then swing it over the shoulder, under the armpit and up to the starting point.



S	58 - 72 cm
M	72 - 82 cm
L	82 - 93 cm





Upper Limb Orthosis Fix N 30201

- Fixes the shoulder girdle in all planes
- Improved design for fast and simple mounting
- Lightweight design appropriate for any physical condition
- Breathable material with cotton lining

INDICATIONS

- After shoulder luxation
- Postoperative treatment of the area
- Periarthritis humeroscapularis

SIZE

Measure the rib circumference.
Same model for both left and right arm

CIRCUMFERENCE

M	65 - 95 cm
L	95 - 130 cm



1 2 3 4 **5**
STABILIZATION LEVEL

Mitela Light N 31205

- Ergonomic construction with an opening for the elbow
- Breathable cotton material
- Secure and comfortable upper limb support

INDICATIONS

- Traumatic injuries of the upper limb
- During cast immobilization
- After surgery in the area

SIZE

Measure the length from the elbow to the base of the fingers



1 2 3 4 5

STABILIZATION LEVEL

M 27 - 36 cm

L 36 - 45 cm



Mitela Light Ortho N 31605

- Light and multifunctional construction
- Suits different forearm circumferences
- Breathable material with cotton lining

INDICATIONS

- Traumatic injuries of the upper limb
- During cast immobilization
- After surgery in the area

SIZE

Universal size



1 2 3 4 5

STABILIZATION LEVEL



Epibrace Comfort N 31203

- Anatomic silicone pad
- Viscoelastic pressure over the muscles
- Doesn't restrict movement, remains in place during sports
- Breathable antibacterial material

INDICATIONS

- Epicondylitis lateralis - tennis elbow
- Epicondylitis medialis - golf elbow

SIZE

Universal size. Suitable for underarm circumferences of 22 - 36 cm



Elbow Brace Light N 30700

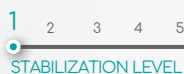
- Light stabilisation of the elbow and adjacent musculature
- Fits perfectly to the anatomical contours of the area
- Lightweight material, allows body moisture
- Preserves the physiological range of motion
- Suitable for sports and everyday activities

INDICATIONS

- Tension and mild muscle pain
- Mild soft-tissue strains
- During the recovery period after light injuries in the area

SIZE

Measure the circumference of the elbow in the flexion area, with the arm extended



CIRCUMFERENCE

S	22 - 26 cm
M	26 - 32 cm
L	32 - 36 cm

Elbow Brace Comfort N 30701

- Reduces pain in the epicondyle area
- Built-in pads for local pressure
- Moveable elastic strap
- Light breathable double-layer material

INDICATIONS

- Insertionitis in the elbow area
- Muscle overstrains of the forearm
- Mild distortions

SIZE

Measure the circumference of the elbow in the flexion area, with the arm extended



CIRCUMFERENCE

XS	20 - 24 cm
S	24 - 26 cm
M	26 - 28 cm
L	28 - 32 cm
XL	32 - 36 cm

Elbow Brace Standard N 30801

- Built-in pads for local pressure
- Reduces stress and pain in the epicondyles
- Adjustable tightening
- Allows free movement of the joint
- Breathable double-layer material

INDICATIONS

- Moderate insertionitis in the elbow area
- Muscle pain due to overstaining
- Mild distortions in the area

SIZE

Measure the circumference of the elbow in the flexion area, with the arm extended



CIRCUMFERENCE

XS	20 - 24 cm
S	24 - 26 cm
M	26 - 28 cm
L	28 - 32 cm
XL	32 - 36 cm

Wrist and Forearm Orthosis Standard N 31202

- Moderate level of fixation of the wrist area
- Metal plate with an adaptable anatomic shape
- Three Velcro straps for adjustable tightening
- Breathable material with cotton lining

INDICATIONS

- Wrist area distortion
- Tenosynovitis
- Carpal tunnel syndrome
- Postoperative treatment



SIZE

Measure forearm circumference 10 cm above the wrist. Different model for left and right arm

1 2 **3** 4 5

STABILIZATION LEVEL



CIRCUMFERENCE

S	18 - 20 cm
M	20 - 23 cm
L	23 - 27 cm

Wrist and Forearm Orthosis Extra N 31603

- Secure stabilisation of the forearm and wrist
- 1 metal and 1 plastic adaptable plates
- 26 cm maximum length
- Double fixation of the wrist area
- Breathable material with cotton lining

INDICATIONS

- Distortion, tendinitis of the wrist
- Distal forearm fractures
- Postoperative treatment

SIZE

Measure the forearm circumference 10 cm above the wrist. Different model for left and right arm



CIRCUMFERENCE

S	18 - 20 cm
M	20 - 23 cm
L	23 - 27 cm



Thumb and Forearm Orthosis Fix N 31604

- Fixation of the thumb, wrist, and forearm
- 1 plastic and 2 metal adaptable plates
- Non-elastic straps for precise tightening
- Breathable material with cotton lining

INDICATIONS

- Wrist and thumb distortion
- De Quervain syndrome, tenosynovitis
- First ray, ulna, and radius fractures

SIZE

Measure the forearm circumference 10 cm above the wrist. Same model for left and right arm



CIRCUMFERENCE

S	18 - 20 cm
M	20 - 23 cm
L	23 - 27 cm



Hand Orthosis Antispastic

new

N 31609



- Fixes the position of the wrist, palm and fingers
- Five soft and comfortable suede straps
- Lightweight polymer construction

INDICATIONS

- In cases of increased muscle tone in the area of the forearm, palm and fingers for various reasons – strokes, brain injuries, multiple sclerosis, Parkinson's disease, etc.

SIZE

Different model for left and right arm

Measure wrist circumference



CIRCUMFERENCE

S	14 - 16 cm
M	17 - 19 cm
L	20 - 22 cm

1 2 3 4 **5**

STABILIZATION LEVEL



Thumb Stabilizer Light N 31201

- Light stabilisation of the thumb and wrist
- Metal plate with an adaptable anatomic shape
- Breathable material with cotton lining

INDICATIONS

- Slight distortion of thumb joints
- Tenosynovitis in the area
- Postoperative treatment

SIZE

Measure wrist circumference. Same model for left and right hand

CIRCUMFERENCE

S	14 - 16 cm
M	16 - 19 cm
L	19 - 21 cm



Thumb Orthosis Standard N 31602

- Secure stabilisation of the thumb and wrist
- Durable metal insert with an adaptable shape
- Double envelopment of the thumb and thenar
- Breathable material with cotton lining

INDICATIONS

- Scaphoid fractures
- Thumb fractures
- Distortions of wrist and thumb
- De Quervain syndrome

SIZE

Measure wrist circumference. Same model for left and right hand

CIRCUMFERENCE

S	14 - 16 cm
M	16 - 19 cm
L	19 - 21 cm



Hand Orthosis Standard II, III and IV Phalanges N 31606

- Stable immobilisation of the II, III or IV phalanx
- 1 adaptable metal plate
- 4 non-elastic, soft straps
- Light, pleasant to the touch textile

INDICATIONS

- Distorsions and luxations in the joints of the second, third or fourth phalanges
- Stable fractures and epiphysiolias in the region
- Postoperative treatment in the region
- Tendovaginitis in the region

SIZE

The correct size is determined by measuring the distance from the tip of the longest finger of the hand to the wrinkle on the wrist



CIRCUMFERENCE

S	14 - 17 cm
M	17 - 20 cm
L	20 - 23 cm



Hand Orthosis Standard V Phalanx N 31607

- Stable immobilisation in the region of the fifth phalanx
 - 3 non-elastic soft straps, movable for precise tightening
 - 1 adaptable metal plate
 - Cotton-lined breathable textile

INDICATIONS

- Distortions and luxations in the joints of the fifth phalanx
- Stable fractures and epiphysiolias in the region
- Postoperative treatment in the region
- Tendovaginitis in the region

SIZE

The correct size is determined by measuring wrist circumference



CIRCUMFERENCE

S	14 - 16 cm
M	16 - 18 cm
L	18 - 20 cm



Wrist Brace Light N 31204

- Stabilises the wrist area
- Reduces stress on the ligaments
- Adjustable tightening
- Breathable material with cotton lining

INDICATIONS

- Chronic hypertension or traumas
- Tenosynovitis of flexors or extensors

SIZE

Universal size. Suited for wrist circumferences of 14 – 21 cm



Wrist Brace Light Plus N 31601

- Strengthens and fixates the wrist area
- Attaches to the thumb and remains in place
- Moderate warming effect for muscle relaxation
- Breathable elastic material

INDICATIONS

- Hypertension or wrist traumas
- Tenosynovitis of flexors and extensors

SIZE

Universal size. Suited for wrist circumferences of 14 – 21 cm





Back Brace Light Elastic N 10104

- Light back support
- Two pairs of 16 cm polymeric stays
- Light and low-profile construction
- Breathable, hypoallergenic, elastic material

INDICATIONS

- Slight muscle strains
- Pain related to work posture and overwork
- Muscle weakness



SIZE

Measure waistline circumference



CIRCUMFERENCE

S	65 - 75 cm
M	75 - 90 cm
L	90 - 110 cm



STABILIZATION LEVEL



Back Brace Comfort N 10203

- Stabilizes the distal lumbar area
- 3 metal stays - 25 cm high
- Double additional tightening
- Breathable elastic material

INDICATIONS

- Discopathy and radiculitis
- Work posture related pain
- Muscle trauma



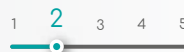
SIZE

Measure waistline circumference



CIRCUMFERENCE

S	75 - 90 cm
M	90 - 105 cm
L	105 - 120 cm
XL	120 - 140 cm



STABILIZATION LEVEL

Back Brace Standard N 10102

- Moderate level of back support
- 4 metal posterior-lateral stays
- 26 cm dorsal height
- Elastic straps for additional tightening
- Breathable, hypoallergenic, elastic material

INDICATIONS

- Radiculopathy
- Discopathy, spondyloarthritis
- Disc herniation: pre- and postoperative
- Muscle trauma



SIZE

Measure waistline circumference

CIRCUMFERENCE

S	66 - 78 cm
M	78 - 90 cm
L	90 - 105 cm
XL	105 - 120 cm
XXL	120 - 135 cm



Back Brace Standard Anatomic N 10108

- Moderate level of back support
- 4 pairs of elastic stays, 26 cm height
- Removable additional tightening
- Elegant low-profile design
- Breathable, hypoallergenic, elastic material

INDICATIONS

- Radiculopathy
- Discopathy, Spondyloarthritis
- Disc herniation: pre- and postoperative
- Muscle traumas



SIZE

Measure waistline circumference

CIRCUMFERENCE

S	60 - 75 cm
M	75 - 90 cm
L	90 - 105 cm
XL	105 - 120 cm
XXL	120 - 140 cm





Back Brace Standard Mommy N 10107

- Reduces thoracolumbar tension pain
- 4 pairs of elastic stays
- Universal size for the whole pregnancy period
- Elastic breathable material with cotton lining

INDICATIONS

- Discopathy
- Pregnancy related radiculitis
- Sacroiliac joint pain
- Hyperlordosis and related complaints

SIZE

Universal size. Suited for waistline circumferences of 80 - 125 cm



Back Brace Extra N 10101

- Medium-high level of back support
- 6 metal dorsal stays, 26 cm height
- Double additional tightening
- Breathable, hypoallergenic, elastic material

INDICATIONS

- Discopathy, spondyloartritis
- Disc herniation: pre- and postoperative
- Muscle traumas

SIZE

Measure waistline circumference



CIRCUMFERENCE

S	66 - 78 cm
M	78 - 90 cm
L	90 - 105 cm
XL	105 - 120 cm
XXL	120 - 135 cm

Back Brace Extra Max N 10110

- High level of support
- 6 metal stays with max. stability, 26 cm height
- Triple additional tightening
- Breathable, hypoallergenic, elastic material

INDICATIONS

- Spondylolisthesis, lumbar osteoarthritis
- Disc herniation, discopathy
- Traumatic or pathological fractures
- Postoperative treatment



CIRCUMFERENCE

S	60 - 75 cm
M	75 - 90 cm
L	90 - 105 cm
XL	105 - 120 cm
XXL	120 - 140 cm



SIZE

Measure waistline circumference



Back Brace Extra Hessing N 20102

- Fixates thoracolumbar area
- 4 stable metal stays
- Elastic straps for shoulder fixation
- Comfortable for use both seated and standing up
- Breathable, hypoallergenic, elastic material

INDICATIONS

- Osteoporotic kyphosis
- Postoperative treatment
- Disc herniation, discopathy

CIRCUMFERENCE

S	66 - 78 cm
M	78 - 90 cm
L	90 - 105 cm
XL	105 - 120 cm
XXL	120 - 135 cm



SIZE

Measure waistline circumference





LUMBOFIX N 10113

- Fixates the whole lumbosacral area
- 8 stable metal stays, 36 cm height
- Triple additional tightening
- Comfortable for use both seated and standing up
- Cotton lining and breathable elastic material

INDICATIONS

- Traumatic and pathological fractures
- Postoperative
- Disc herniation, spondylolisthesis

SIZE

Measure waistline circumference

CIRCUMFERENCE

S	66 - 78 cm
M	78 - 90 cm
L	90 - 105 cm
XL	105 - 120 cm
XXL	120 - 135 cm



DORSOFIX N 10112

- Complete fixation of the spine
- Stays and plates for maximal support
- Individual height adjustment
- Triple additional tightening
- Breathable elastic material with cotton lining

INDICATIONS

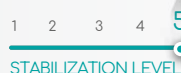
- Traumatic or pathological fractures
- Spondylolisthesis, disc herniation
- Postoperative treatment

SIZE

Measure waistline circumference

CIRCUMFERENCE

S	66 - 78 cm
M	78 - 90 cm
L	90 - 105 cm
XL	105 - 120 cm
XXL	120 - 135 cm



Chest Brace N 10114

- Moderate level of chest stabilization
- Suitable for both men and women
- Cotton lining and breathable elastic material

INDICATIONS

- Post thoracic surgery
- Ribs fracture
- Chest trauma

SIZE

Measure chestline circumference



CIRCUMFERENCE

M	85 - 95 cm
L	95 - 105 cm
XL	105 - 115 cm
XXL	115 - 125 cm
XXXL	125 - 135 cm



Chest/Abdominal Wall Brace N 10105

- Supports the abdominal or thoracic area
- Stable construction based on overlapping straps
- 2 stabilising plastic stays
- Ventral height: 20 cm - 30 cm
- Breathable, hypoallergenic, elastic material

INDICATIONS

- Postoperative treatment
- After birth: caesarean section or natural

SIZE

Measure waistline/chestline circumference



CIRCUMFERENCE

S	66 - 78 cm
M	78 - 90 cm
L	90 - 105 cm
XL	105 - 120 cm
XXL	120 - 135 cm





Abdominal Wall Brace Plus N 10106

- Secures the abdominal area
- Construction based on overlapping straps
- 4 metal stays, 25 cm each
- Ventral height: 20-30 cm
- Breathable, hypoallergenic, elastic material

INDICATIONS

- Abdominal operations and discopathy
- Post-birth radiculitis complaints
- Discopathy and flaccid abdominal wall

SIZE

Measure waistline circumference

CIRCUMFERENCE

S	66 - 78 cm
M	78 - 90 cm
L	90 - 105 cm
XL	105 - 120 cm
XXL	120 - 135 cm



Abdominal Hernia Brace N 10103

- Secures frontal abdominal wall
- Stable front segment for comfortable pressure distribution
- 2 supporting plastic stays
- Cotton lining and breathable elastic material

INDICATIONS

- Postoperative treatment as prevention
- In cases of a reparable abdominal herniation
- Postoperative treatment of abdominal herniation

SIZE

Measure waistline circumference

CIRCUMFERENCE

M	78 - 90 cm
L	90 - 105 cm
XL	105 - 120 cm
XXL	120 - 135 cm
XXXL	135 - 150 cm



Stoma Support Brace N 10109

- Secures the area around the stoma
- Precise positioning and pressure adjustment
- Breathable, hypoallergenic, elastic material

INDICATIONS

- Prophylaxis of eventrations
- Secures small eventrations

SIZE

Measure waistline circumference



CIRCUMFERENCE

S	80 - 90 cm
M	90 - 100 cm
L	100 - 110 cm
XL	110 - 120 cm



Back Brace Standard Basic N 10116

- Moderate level of waistline stabilisation
- 4 metal stays, 26 cm height
- Innovative material for direct fixation
- Breathable, hypoallergenic elastic material

INDICATIONS

- Radiculopathy
- Discopathy, Spondyloarthritis
- Disc herniation: pre- and postoperative

SIZE

Measure waistline circumference



CIRCUMFERENCE



1	60 - 95 cm
2	95 - 120 cm



Patellabrace Comfort

N 40202

- Silicone anatomic pad
- Viscoelastic pressure over the patellar ligament
- Elevates the patella and reduces pain
- Doesn't obstruct movement and stays in place during sports
- Breathable material with antibacterial features

INDICATIONS

- Apex patellae syndrome
- Osgood-Schlatter disease
- Patellofemoral arthrosis
- Patellar ligament tendinitis

SIZE

Universal size.

Suited for knee circumferences (under the patella) of 27 - 45 cm



Knee Brace Comfort N 40201

- Comfortable stabilisation of the knee joint
- Patella-stabilising ring with an opening
- Open construction for individual adjustment
- Cotton lining and breathable elastic material
- Light, breathable, elastic fabric
- Suitable for sport and everyday activities

INDICATIONS

- Patellofemoral arthritis
- Gonarthrosis
- Soft tissue injuries in the area

SIZE

Measure knee circumference

CIRCUMFERENCE	
M	33 - 39 cm
L	39 - 48 cm



Knee Brace Comfort Plus N 40801

- Elastic collateral stabilisation
- Anatomically-shaped trapezoidal open ring for stabilisation of the patella
- Light, breathable, elastic fabric
- Suitable for sports and everyday activities

INDICATIONS

- Moderate sprains or chondropathy
- Osgood-Schlatter disease
- Pain in the muscle points of insertion around the knee

SIZE

Bend your knee at a 90° angle and measure the circumference right below the knee joint.



CIRCUMFERENCE

XS	28 - 31 cm
S	31 - 34 cm
M	34 - 37 cm
L	37 - 41 cm
XL	41 - 45 cm



Knee Brace Standard N 40701

- Elastic stabilisation of the collateral ligaments
- Anatomically-shaped trapezoidal ring for the patella
- Light, breathable, elastic fabric
- Doesn't limit the physiological range of motion
- Suitable for sports and everyday activities

INDICATIONS

- Moderate to severe sprains or chondropathy
- Collateral ligament injuries
- Gonarthrosis
- Patellar instability

SIZE

Bend your knee at a 90° angle and measure the circumference right below the knee joint.



CIRCUMFERENCE

XS	28 - 31 cm
S	31 - 34 cm
M	34 - 37 cm
L	37 - 41 cm
XL	41 - 45 cm



Knee Brace Standard plus N 40703

- Elastic stabilisation of the collateral ligaments
- Open construction for individual adjustment
- Padded ring which stabilises the patella
- Light, breathable, elastic fabric
- Doesn't limit the physiological range of motion

INDICATIONS

- Moderate to severe sprains or chondropathy
- Collateral ligament injuries
- Gonarthrosis
- Patellar instability

SIZE

Bend your knee at a 90° angle and measure the circumference right below the knee joint



CIRCUMFERENCE

XS	28 - 31 cm
S	31 - 34 cm
M	34 - 37 cm
L	37 - 41 cm
XL	41 - 45 cm



Knee Brace Extra N 40702

- Stable collateral stabilisation via aluminium mechanism with anatomic axes of movement
- Anatomically-shaped trapezoidal ring stabilising the patella
- Nonelastic straps fix the construction in place
- Light, breathable, elastic fabric

INDICATIONS

- Joint capsule and ligament injuries
- Meniscal injuries
- Medial or lateral instability
- Gonarthrosis

SIZE

Bend your knee at a 90° angle and measure the circumference right below the knee joint



CIRCUMFERENCE

XS	28 - 31 cm
S	31 - 34 cm
M	34 - 37 cm
L	37 - 41 cm
XL	41 - 45 cm



Knee Brace Fix N 40601

- Immobilises the knee joint in extension
- 3 rigid stays with an anatomic shape
- Individual adjustment of the stays
- Velcro straps for precise tightening
- Breathable material with cotton lining

INDICATIONS

- Knee joint distortions
- Postoperative treatment
- Hypertonus of the knee flexors



SIZE

Measure the patient's height and hip circumference 22 cm above the patellar centre



CIRCUMFERENCE

S	40 - 55 cm
M	45 - 55 cm
L	55 - 65 cm

HEIGHT

1	to 170 cm
2	over 170 cm



Knee Brace Fix Uni N 40604

- Immobilises the knee joint in extension
- 3 rigid stays with anatomic shape
- Individual adjustment of the stays
- 4 Velcro straps for precise tightening
- Construction featuring 3 textile elements
- Breathable material with cotton lining

INDICATIONS

- Knee joint distortion
- Postoperative treatment
- Hypertonus of the knee flexor



SIZE

Universal size. Suited for a hip circumference (22 cm above the patellar centre) of 40 - 65 cm



Knee Brace Fix 20°

new

N 40603

- Immobilize the knee joint bent at 20 degrees
- Anatomically shaped bands
- Adjustable Velcro straps for maximum comfort
- Cotton lining of the breathable material

INDICATIONS

- Knee joint distortions
- Injury of the collateral ligaments of the knee
- Postoperative treatment

INDICATIONS

Measure your height and thigh circumference 22 cm above the middle of the patella.

1 2 3 4 5

STABILIZATION LEVEL

CIRCUMFERENCE

S*	40 - 55 cm
M	45 - 55 cm
L	55 - 65 cm

HEIGHT

1	go 170 cm
2	Hog 170 cm

*only height 1



Multi-centric Knee Brace Fix N 40602

- Control over the range of motion of the knee joint
- Flexion: 0-120°, extension: 0-90°; can be adjusted in 15° increments
- Velcro straps for precise tightening
- Comfortable multi-strap construction

INDICATIONS

- When control over range of motion is needed
- Injuries of ACL, PCL, MCL, LCL
- Postoperative treatment



SIZE

Measure patient's height

HEIGHT

M to 185 cm
L over 185 cm

1 2 3 4 5

STABILIZATION LEVEL



Multi-centric Knee Brace Fix + N 40606

- Control over the range of motion of the knee joint
- Flexion: 0-120°, extension: 0-90°; can be adjusted in 15° increments
- Velcro straps for precise tightening
- Comfortable multi-strap construction

INDICATIONS

- When control over range of motion is needed
- Injuries of ACL, PCL, MCL, LCL
- Postoperative treatment

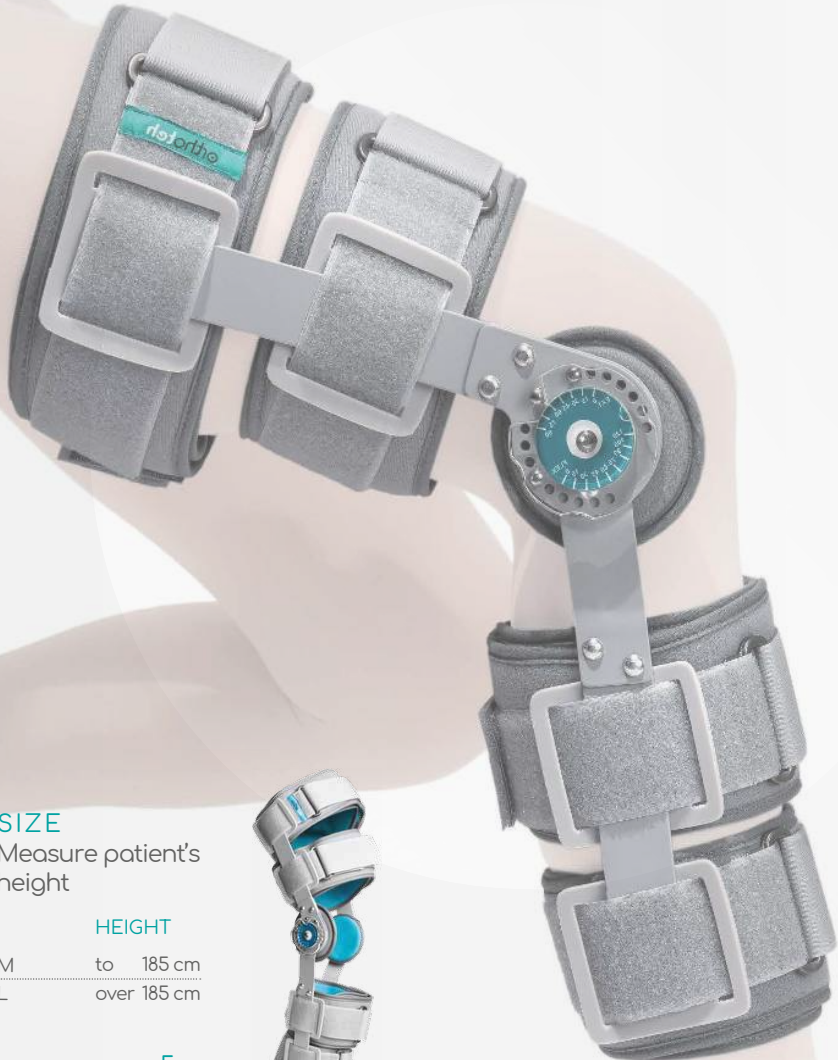
SIZE

Measure patient's height

HEIGHT

M	to	185 cm
L	over	185 cm

1 2 3 4 **5**
STABILIZATION LEVEL

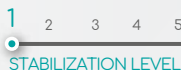


Ankle Brace Light N 40802

- Provides light ankle stabilisation
- Shaped to wrap tightly around the anatomy of the area
- Preserves the physiological freedom of motion
- Suitable for sports and everyday activities

INDICATIONS

- Feeling of instability
- Mild soft tissue sprains
- During recovery after mild injuries in the region



SIZE

Measure the circumference of the ankle around the heel

CIRCUMFERENCE

S	29 - 32 cm
M	32 - 35 cm
L	35 - 38 cm
XL	38 - 41 cm



Ankle Brace Comfort N 40203

- Stabilizes the ankle
- Comfort anatomical construction
- Light and breathable elastic fabric
- Suitable for sports and everyday activities

INDICATIONS

- Mild ankle distortions
- Mild ankle instability, arthrosis
- For post-distortion sports

SIZE

Measure ankle circumference

CIRCUMFERENCE

S	20 - 23 cm
M	23 - 27 cm
L	27 - 31 cm
XL	31 - 35 cm



Ankle Brace Standard N 40803

- Supports and stabilises the ankle
- Comfortable anatomic design
- Elastic and nonelastic stabilising elements
- Suitable for sports and everyday activities

INDICATIONS

- Mild to moderate sprains in the region
- Chronic instability
- Early-stage arthrosis

SIZE

Measure the circumference of the ankle around the heel



CIRCUMFERENCE

S	29 - 32 cm
M	32 - 35 cm
L	35 - 38 cm
XL	38 - 41 cm



Ankle Brace Extra N 40804

- Elastic stabilisation of the medial and lateral ankle ligaments
- Long elastic bands which envelop the foot and ankle tightly
- Light and breathable elastic fabric

INDICATIONS

- Acute traumas of the lateral ligaments and tendon of the ankle
- Treatment of stable ankle fractures
- Capsulitis and tendinitis following a fracture or tendon injuries
- Arthrosis with instability

SIZE

Measure the circumference of the ankle around the heel



CIRCUMFERENCE

S	29 - 32 cm
M	32 - 35 cm
L	35 - 38 cm
XL	38 - 41 cm



Shell Ankle Brace Standard N 40301

- Effective stabilization with 2 plastic elements
- Memory foam softening around the malleoli
- Fixation with two strips of nonelastic velour
- Adjustable width around the heel bone

INDICATIONS

- Lateral or medial distortions
- Postoperative treatment
- Relieves chronic arthritis pain

SIZE

Universal size



Peroneal Brace Standard N 40302

- Prevents steppage gait
- Low-profile elastic construction
- Additional padding of the fastening straps

INDICATIONS

- Peroneal nerve palsy

SIZE

Size depends on the shoe size. Different model for left and right leg

	Nº
S	34 - 37
M	38 - 41
L	42 - 45



Ankle Positioning Orthosis Fix N 40305

- Fixes the ankle in neutral position
- Anti-decubitus padding
- Adjustment of the rotation of the leg
- Breathable material with cotton lining

INDICATIONS

- After head injuries
- Proximal femur injuries
- Post-stroke condition

SIZE

Size depends on shoe size



Nº

S	34 - 37
M	38 - 41
L	42 - 45

1 2 3 4 5
STABILIZATION LEVEL

Clavicle Brace Kids N 60502

- Stable fixation of the clavicle area
- Comfortable construction in the axillary area
- Soft and immobile back plate
- Breathable, stable, and antibacterial material with soft padding

INDICATIONS

- Clavicle fractures
- Sternoclavicular or acromioclavicular joint distortion

SIZE

Universal size.
Excess length can be cut off

1 2 3 4 **5**
STABILIZATION LEVEL



Clavicle Brace Kids plus N 60508

- Stable fixation of the clavicle area
- Comfortable construction in the axillary area
- Soft and immobile back plate
- Breathable, stable, and antibacterial material with soft padding

INDICATIONS

- Clavicle fractures
- Sternoclavicular or acromioclavicular joint distortion

SIZE

Universal size. Measure the circumference with a starting point on the back spine in the middle of the shoulder blades, then swing it over the shoulder, under the armpit, and up to the starting point. The size range is from 49 to 58 cm



1 2 3 4 **5**
STABILIZATION LEVEL



Upper Limb Orthosis Kids N 60506

- Fixes the shoulder girdle in all planes
- Comfortable padding in all areas
- Improved design for fast and simple mounting
- Breathable material with cotton lining

INDICATIONS

- After shoulder dislocation
- Postoperative treatment of the shoulder area



SIZE

Universal size.
Suitable for both left and right hand.
Recommended for rib circumferences of
45 - 65 cm



Mitelo Kids N 60504

- Ergonomic construction with an opening for the elbow
- Breathable cotton material
- Secure and comfortable upper limb support

INDICATIONS

- Traumatic injuries of the upper limb
- During cast immobilization
- After soft tissue operations in the indicated area

SIZE

Universal size



Wrist and Forearm Orthosis Kids N 60505

- Moderate level of stabilisation of the wrist area
- Adjustable metal and polymeric plates
- Three non-elastic straps strengthen the construction
- Breathable material with cotton lining

INDICATIONS

- Distortion in the wrist area
- Fractures of the distal forearm
- Postoperative treatment

SIZE

Suitable for both left and right hand

S Orthosis length 18 cm

M Orthosis length 21 cm



Knee Brace Kids N 60507

- Immobilizes the knee joint in extension
- 3 rigid metal stays with an anatomic shape
- Stays can be shaped individually
- Velcro straps for precise tightening
- Breathable material with cotton lining

INDICATIONS

- Distortion of the knee joint
- After operative treatment
- Hypertonus of the knee flexors

SIZE

XS brace length 25 cm

S brace length 30 cm

M brace length 37 cm



Frejka Pillow Kids N 60503

- Holds the abduction in the hip joints
- Allows partial movement

new design

INDICATIONS

- Light neonatal dysplasia of the hip
- After treatment with Pavlik harness

SIZE

The correct size is determined by the doctor in charge. A relatively accurate guideline is the child's weight and height.

- | | |
|---|---|
| 1 | 2,5 to 3,5 kg and a height of 45 to 50 cm |
| 2 | 3,5 to 4,5 kg and a height of 50 to 55 cm |
| 3 | 4,5 to 6 kg and a height of 55 to 61 cm |
| 4 | 6 to 7,5 kg and a height of 60 to 66 cm |



Pavlik Harness Kids N 60501

- Holds the hip joint in position for optimal recovery
- The position can be adjusted using Velcro straps
- Made of padded cotton textile

new design

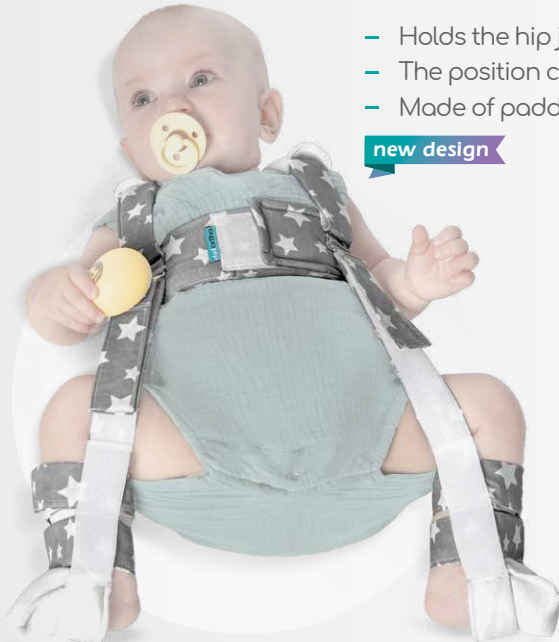
INDICATIONS

- Dysplasia of the hip joint
- Subluxation of the hip joint
- Luxation of hip joint

SIZE

The correct size is determined by the doctor in charge. A relatively accurate guidance is the age of the baby or its weight.

- | | |
|---|----------------------------|
| 1 | 1 - 2 month u 2,5 - 3,5 kg |
| 2 | 3 - 4 month u 4 - 6 kg |
| 3 | 5 - 6 month u nad 6 kg |



Supinators Kids N 50401

- Support and help adjust the longitudinal arch
- Improve the overall stability of the foot
- Hold the heels in an anatomically correct position

INDICATIONS

- Flexible Flatfoot
- Pes Valgus (X-position of the heels)
- Foot pain

SIZE

Size depends on shoe size

Nº

19 - 20

21 - 22

23 - 24

25 - 26

27 - 28

29 - 30

31 - 32





Silicone Insoles Classic N 50403

- Silicone shock absorbent construction
- Offers moderate support for the transverse and longitudinal arches
- Allows fast and easy cleaning

INDICATIONS

- Plantar fasciitis
- Metatarsalgia
- Polyneuropathic pain
- Rheumatic feet
- Pain during sports, hiking, or other physical exercises

SIZE

Size depends on shoe size

Nº 36 - 46



Silicone Insoles with 3 Soft Zones N 50404

- Silicone shock absorbent construction
- Three extra-soft zones
- Offers moderate support for the transverse and longitudinal arches
- Allows fast and easy cleaning

INDICATIONS

- Plantar fasciitis
- Metatarsalgia
- Rheumatic feet
- Pain during sports, hiking, or other physical exercises

SIZE

Size depends on shoe size

Nº 36 - 46



3/4 Silicone Insoles

N 50416

- Silicone shock absorbent construction
- They reduce pain in the feet and the ankles
- 3/4 insole length for less bulk

INDICATIONS

- Plantar fasciitis
- Metatarsalgia
- Pain in the pads of the ankle and foot
- Polyneuropathic foot pain
- Pain during sports, discomfort and easy fatigue

SIZE

Size depends on shoe size

	Nº
XS	35 - 37
S	38 - 40
M	41 - 43
L	44 - 47



Madame Silicone Insoles

N 50415

- Thin, suitable for sandals and women's shoes with high heels
- They reduce the pressure in the area of the cushions of the foot
- 3/4 insole length for less bulk

INDICATIONS

- Metatarsalgia
- Pain in the area of the cushions of the foot
- Pain associated with exertion

SIZE

Size depends on shoe size

	Nº
XS	35 - 36
S	37 - 38
M	39 - 40
L	41 - 42



Madame

orthoSoft

Silicone heels Classic N 50405

- Silicone shock absorbent construction
- Relaxes the Achilles tendon
- Allows fast and easy cleaning

INDICATIONS

- Plantar fasciitis
- Achilles tendinopathy
- Conditions after fracture of the heel bone and varicose veins

SIZE

Sizing depends on shoe size

	Nº
S	34 - 37
M	37 - 41
L	41 - 44



Silicone Heels with Soft Zone N 50408

- Silicone shock absorbent construction
- Extra-soft zone for pain reduction
- Relaxes the Achilles tendon
- Allows fast and easy cleaning

INDICATIONS

- Plantar fasciitis
- Achilles tendinopathy
- Conditions after fracture of the heel bone and varicose veins

SIZE

Sizing depends on shoe size

	Nº
S	34 - 37
M	37 - 41
L	41 - 44



Hallux Light Toe Separators N 50406

- Anatomic construction, designed to stay in place
- Reduces pain around the thumb
- Allows fast and easy cleaning

INDICATIONS

- Elastic Hallux Valgus
- Pain in the joint behind the big toe (knuckle)
- To maintain correction after surgical treatment

SIZE

M, L



Hallux Rings Toe Separators N 50409

- Reduces pressure and friction on the thumb
- Comfortably separates the first from the second finger
- Allows fast and easy cleaning

INDICATIONS

- Elastic Hallux Valgus
- Pain in the joint behind the big toe (knuckle)
- To maintain correction after surgical treatment

SIZE

S, M, L



Hallux Protect Toe Separators N 50410

- Absorbs lateral pressure
- Spreads and separates the thumb from the second finger
- Allows fast and easy cleaning

INDICATIONS

- Elastic Hallux Valgus
- Pain in the joint behind the big toe (knuckle)
- To maintain correction after surgical treatment

SIZE

Universal



Hallux Protect Duo Toe separators N 50411

- Separates curled and crossed toes
- Protects the thumb joint (knuckle) from painful pressing
- Allows fast and easy cleaning

INDICATIONS

- Elastic Hallux Valgus
- Pain in the joint behind the big toe (knuckle)
- To maintain correction after surgical treatment

SIZE

Universal



Little Toe Protector N 50412

- Protects friction on the little finger
- Reduces painful callousing
- Allows fast and easy cleaning

INDICATIONS

- Pain around the little toe
- Calluses and chafing
- Uncomfortable shoes

SIZE

Universal



Textile toe protector N 50413

- Made of polymer gel and covered with textile
- Reducing the friction between the toes
- Speeds up the healing process

INDICATIONS

- Abrasions and injuries of the toes
- Calluses on the toes
- To protect the toes when heavily pressured

SIZE

S, M







3D Contour is a line of custom orthopaedic insoles which relies on **digital technology** for the consultation, design and production. **The 3D visualisation** of the scanned feet illustrates the individual needs of each patient. The digital process allows for a rapid transfer of information, increasing the precision of the design and production of every detail. This line offers different models of insoles uniquely designed according to the patient's individual needs.

Easy to order subsequent pairs of insoles

Another advantage of this line is that the digital project of every patient's insoles is **saved**. Under certain conditions, it can be used to **remotely order** and deliver a subsequent pair.



1. Examination and scanning



2. Design



3. Milling



4. Finish

Custom Made Insoles N 801301 Comfort Basic



- Soft and elastic support structure
- Highly shock-absorbent
- High resistance to stress
- Relieves pain in the foot, ankle and knee

Custom Made Insoles N 801302 Soft Basic



- Extremely light and soft support structure
- Isolates the painful areas in the foot
- Excellent shock-absorbent
- Relieves pain in the foot, ankle
- Suitable for minor cases of flatfoot and mild loads

Custom Made Insoles N 801305 Max Basic



- Very high resistance to stress
- Moderate shock absorption
- Suitable for corrections of limb length differences or heel position

Custom Made Insoles N 801306 Premium Duo



- Extremely soft and shock-absorbent
- Suitable for both everyday use and sports
- Especially suitable to support of the longitudinal and transverse arch
- Double-layer support structure with different softness levels of the two layers



Custom Made Insoles N 801303 Premium Duo Diabetes

- Also suitable for patients with diabetes
- Suitable for minor cases of flatfoot and mild loads
- Additional antibacterial softening top layer
- Triple-layer construction for maximum softness
- Alleviates pain in highly stressed feet



Custom Made Insoles N 801304 Sport Trio

- Maximum softening effect
- High load resistance
- Stabilises the arch, heel and ankle
- Protects the Achilles' tendon
- Improves the bounce and softens the landing



Custom Made Slippers N 80130_1_1 3D Contour 1.1



- Suitable in cases of mild to medium flatfoot
- Complaints in the metatarsal area
- Feeling tired and / or swelling in the feet
- Pain in the heel
- Shortened Achilles tendons

Custom Made Slippers N 80130_1_2 3D Contour 1.2



- Suitable in cases of mild to medium flatfoot
- Complaints in the metatarsal area
- Feeling tired and / or swelling in the feet
- Pain in the heel
- Shortened Achilles tendons

Custom Made Slippers N 80130_1_3 3D Contour 1.3



- Suitable in cases of mild to medium flatfoot
- Complaints in the metatarsal area
- Feeling tired and / or swelling in the feet
- Pain in the heel
- Shortened Achilles tendons

Custom Made Sandals N 80130_2_1 3D Contour 2.1



- Suitable in cases of mild to medium flatfoot
- Complaints in the metatarsal area
- Pain in the heel
- Feeling tired and / or swelling in the feet
- Shortened Achilles tendons



Custom Made Sandals N 80130_2_2 3D Contour 2.2



- Suitable in cases of mild to medium flatfoot
- Complaints in the metatarsal area
- Pain in the heel
- Feeling tired and / or swelling in the feet
- Shortened Achilles tendons





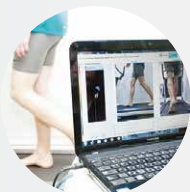


Orthoteh Ltd. is an established leader in the production of custom orthopedic insoles. We have the widest range of products and a network of partners nationwide. The staff at our sites are highly qualified medical specialists who are responsible for the choice of the specific model of insoles.

The custom thermoplastic insoles are produced through the classic technology of taking a 3D impression of the foot using orthopedic foam. For a more accurate diagnosis it is recommended to also perform a [plantographic analysis](#) or to examine the gait using an instrumented treadmill with image analysis.

Types of thermoplastic insoles

Orthoteh manufactures three classes of insoles: custom thermoplastic insoles, custom insoles Elite and our luxury brand custom insoles Capron.



Computer diagnostics and examination



Taking a foot print



Plaster cast



Placing coating and packing

Custom made thermoplastic insoles N 80101



- Modelled over a 3-dimensional foot print
- Provide correction of the transverse and longitudinal arch
- Light and comfortable construction
- Basic model for individual insoles

Custom made thermoplastic insoles with longitudinal arch support N 80102

N 80102



- Additional support for the longitudinal arch

Custom made thermoplastic insoles with heel area correction N 80104

N 80104



- Additional correction of the valgus/varus of the heel

Custom made thermoplastic insoles for length adjustment

N 80105



- For length differences of the lower limbs



Single EVA insole for length adjustment

N 80106



- Manufactured according to the foot size
- For length differences of the lower limbs
- Durable antibacterial coating



EVA insoles for transverse arch

N 80110



- Manufactured according to the foot size
- Provide correction of the transverse arch
- Durable antibacterial coating



Custom made children supinators N 80402



- Manufactured on the base of a 3-dimensional foot print
- Provide stabilisation of the heel
- Provide correction of the longitudinal arch

Custom made insoles Elite

N 80118



- Manufactured on the base of a 3-dimensional foot print
- Provide correction of the transverse and longitudinal arch
- Durable construction
- Washable antibacterial coating

Custom made insoles Elite plus

N 80120



- Manufactured on the base of a 3-dimensional foot print
- Two shock absorbent zones
- Provide correction of the transverse and longitudinal arch
- Durable construction
- Washable antibacterial coating

Custom made insoles for diabetic feet N 80114

- Manufactured on the base of a 3-dimensional foot print
- Provide correction of the transverse and longitudinal arch
- Shock absorbent antibacterial coating
- Helps with polyneuropathic problems



Custom made insoles N 80121 Urban

- Manufactured on the base of a 3-dimensional foot print
- Provide correction of the transverse and longitudinal arch
- Durable construction
- Washable antibacterial coating







Designed and made in Bulgaria

Orthoteh Ltd.
8 Poruchik Nedelcho Bonchev Str.
1528 Sofia, Bulgaria

☎ +359 897 933 981
✉ office@orthoteh-bg.com
📘 [orthoteh.bulgaria](https://www.orthoteh.bulgaria)

REV. CAT.101 V.2 / 04.2026



[orthoteh-bg.com](https://www.orthoteh-bg.com)